

PASADERA

Dining Arm Chair



Item Number: #8653-A

Cushion: Seat: #53-S
Back: #53-B

Material: Steel

Dimensions: W24.25" D27.75" H37"

Seat Cushion: W20" D1" H17.5"

Arm Height: 25.5"

Seat Height: 16"

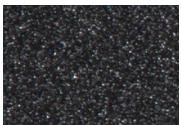
Warranty: Limited 20 Year Structural (frame)
Limited 5 Year Finish
Limited 2 Year Cushion
Limited 2 year Component Parts

Features: -.5"x1.5" Steel Tube Frame
-Super-Polyester Powder Coating
-UV Resistant
-Protective Glides (COM1300)

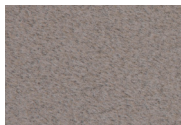
COM Yardage: Back Cushion - 1 yard
Seat Cushion - 1 yard
**Based on 54" wide plain fabric w/ no repeat railroad, or centering. Contact sales@owlee.com for custom fabric quote.*



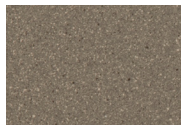
Finishes:



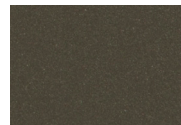
SP21: Graphite



SW40: Driftwood



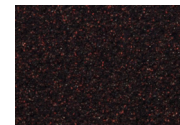
TC20: Sandalwood



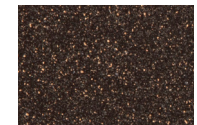
SP18: Dark Bronze



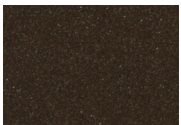
SP40: Copper Canyon



SP11: Rosewood



SP42: Espresso



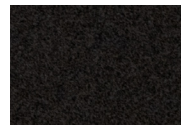
SP22: Sable



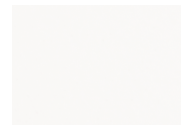
PG10: Terra Antigua



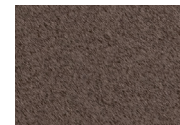
VT15: Velvet Pewter



VT35: Velvet Black



VT25: Velvet White



VT05: Velvet Bonze

