

SAN CRISTÓBAL

Double Chaise Lounge



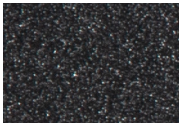
Item Number: #699-DCH
Cushion: #99 (x2)
Material: Wrought Iron
Dimensions: W57.75" D69.5" H41.75"
Seat Cushion: W26" D50" H7" (x2)
Back Cushion: W26" D8" H26" (x2)
Arm Height: 24.25"
Seat Height: 17.75"
Weight: 195 lbs.
Warranty: (Commercial) Limited 5 Year Structural (frame)
Limited 3 Year Finish
Limited 1 Year Cushion
Limited 1 year Component Parts

Features: -3/4" Square Hammered Iron Tubing Frame
-Hand Forged Scrolls with Fish Tail Stamping
-Cast Iron Medallion
-UV Resistant
-Super-Polyester Powder Coating
-Reticulated Outdoor-Grade Foam
-Glides Protect Frame & Surface (COM0101A)



COM Yardage: 8 yards
**Based on 54" wide plain fabric w/ no repeat railroad, or centering. Contact sales@owlee.com for custom fabric quote.*

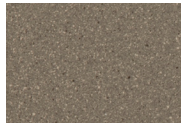
Finishes:



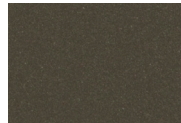
SP21: Graphite



SW40: Driftwood



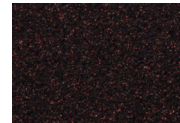
TC20: Sandalwood



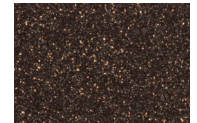
SP18: Dark Bronze



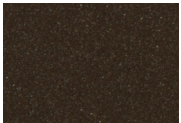
SP40: Copper Canyon



SP11: Rosewood



SP42: Espresso



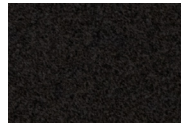
SP22: Sable



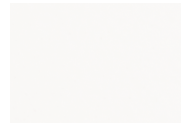
PG10: Terra Antigua



VT15: Velvet Pewter



VT35: Velvet Black



VT25: Velvet White



VT05: Velvet Bonze

