

# Grand Cay

## Swivel Counter Stool



Item Number: #6853-SCS

Cushion: #53-S (seat)  
#103-B (back - optional)

Material: Wrought Aluminum

Dimensions: W24.25" D27" H46"

Seat Cushion: W20" D18" H3"

Back Cushion: W20" D1" H17.5"

Arm Height: 35"

Seat Height: 27.25"

Weight: TBD.

Warranty: Limited 5 Year Structural (frame)  
Limited 3 Year Finish  
Limited 1 Year Cushion  
Limited 1 year Component Parts

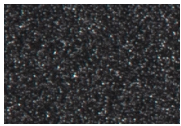
Features: -2" Wide Arm  
-Cast Aluminum Back Detail  
-Delrin Insert Glides  
-Reticulated Outdoor-Grade Foam  
-High Efficiency Transfer Powder Coating  
-UV Resistant  
-Glides: COM0101A



COM Yardage: Back Cushion - 1 yard  
Seat Cushion - 1 yard

*\*Based on 54" wide plain fabric w/ no repeat railroad, or centering. Contact sales@owlee.com for custom fabric quote.*

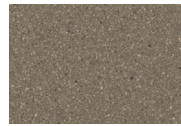
### Finishes:



SP21: Graphite



SW40: Driftwood



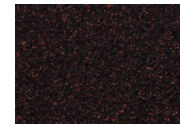
TC20: Sandalwood



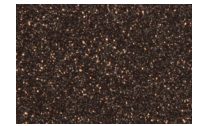
SP18: Dark Bronze



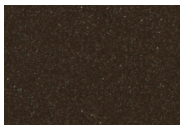
SP40: Copper Canyon



SP11: Rosewood



SP42: Espresso



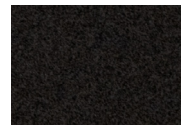
SP22: Sable



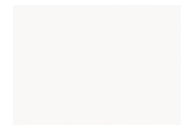
PG10: Terra Antigua



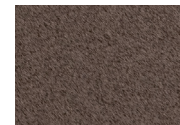
VT15: Velvet Pewter



VT35: Velvet Black



VT25: Velvet White



VT05: Velvet Bronze

