

# CREIGHTON

Lounge Chair



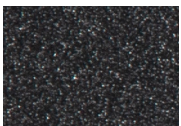
Item Number: #55146-CC  
Cushion: #145 (seat, back and arms)  
Material: Steel  
Dimensions: W38.75" D30" H32"  
Seat Cushion: W26" D21" H7"  
Back Cushion: W26" D8" H19"  
Arm Cushions: W4.75" D30" H15.5"  
Arm Height: 26"  
Seat Height: 19"  
Weight: 88 lbs.  
Warranty: Limited 5 Year Structural (frame)  
(Commercial) Limited 3 Year Finish  
Limited 2 Year Cushion  
Limited 1 year Component Parts



Features: -Angled Iron Frame  
-Decorative Modern Industrial Brackets  
-Sloped Back Cushion for Comfort  
-Super-Polyester powder coating  
-UV Resistant  
-Reticulated Outdoor-Grade Foam  
-Protective Glides (COM0162)

COM Yardage: Seat, Back & Arm Cushions - 4 yards  
*\*Based on 54" wide plain fabric w/ no repeat railroad, or centering. Contact sales@owlee.com for custom fabric quote.*

## Finishes:



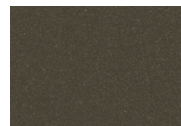
SP21: Graphite



SW40: Driftwood



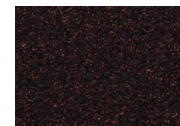
TC20: Sandalwood



SP18: Dark Bronze



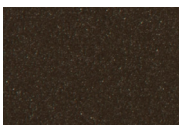
SP40: Copper Canyon



SP11: Rosewood



SP42: Espresso



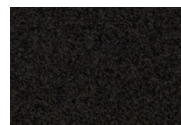
SP22: Sable



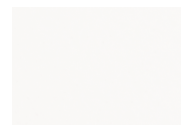
PG10: Terra Antigua



VT15: Velvet Pewter



VT35: Velvet Black



VT25: Velvet White



VT05: Velvet Bronze

