

# KENSINGTON

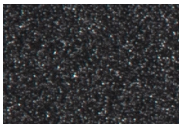
## DINING ARM CHAIR



Item Number: #9134-A  
 Cushion: #34  
 Material: Wrought Aluminum  
 Dimensions: W24" D28.75" H35.75"  
 Seat Cushion: W20" D20" H4"  
 Back Cushion: W20" D6" H20"  
 Arm Height: 25"  
 Seat Height: 20"  
 Weight: 33 lbs.  
 Warranty: Limited 20 Year Structural (frame)  
 (Retail) Limited 5 Year Finish  
 Limited 2 year Component Parts  
 Features: -Detailed Cast aluminum Feet  
 -Cast Aluminum Profile Detail  
 -Super-Polyester Powder Coating  
 -UV Resistant  
 -DuPont Delrin Glides (COM1247)  
 COM: 3 yards  
*\*Based on 54" wide plain fabric w/ no repeat railroad, or centering. Contact sales@owlee.com for custom fabric quote.*



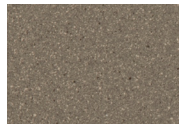
### Finishes:



SP21: Graphite



SW40: Driftwood



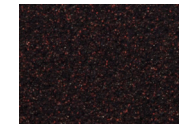
TC20: Sandalwood



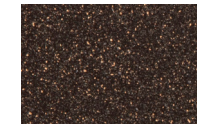
SP18: Dark Bronze



SP40: Copper Canyon



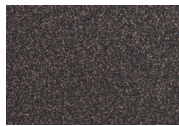
SP11: Rosewood



SP42: Espresso



SP22: Sable



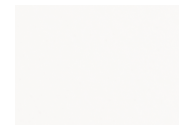
PG10: Terra Antigua



VT15: Velvet Pewter



VT35: Velvet Black



VT25: Velvet White



VT05: Velvet Bonze

