

# CLASSICO-W

Adjustable Double Chaise



Item Number: #938-DCHW  
Cushion: #38 or #58  
Material: Wrought Iron  
Dimensions: W54.25" D68.25" H42.25"  
Seat Cushion: W49" D53" H3.5"  
Back Cushion: W49" D3.5" H30"  
Arm Height: 22.75"  
Seat Height: 18.25"  
Weight: 79 lbs.  
Warranty: Limited 20 Year Structural (frame)  
(Retail) Limited 5 Year Finish  
Limited 5 Year Cushion  
Limited 2 year Component Parts

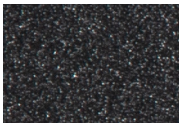
Features: -Hand Forged Wrought Iron  
-3/4" Galvanized Steel Tubing Frame  
-Galvanized Interwoven Lattice Back  
-Aluminum Rivets  
-Reticulated Outdoor-Grade Foam  
-DuPont Delrin Glides (COM0101A)



COM Yardage: 6 yards

*\*Based on 54" wide plain fabric w/ no repeat railroad, or centering. Contact sales@owlee.com for custom fabric quote.*

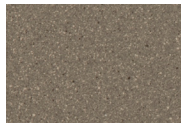
## Finishes:



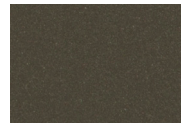
SP21: Graphite



SW40: Driftwood



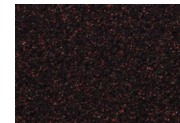
TC20: Sandalwood



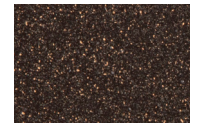
SP18: Dark Bronze



SP40: Copper Canyon



SP11: Rosewood



SP42: Espresso



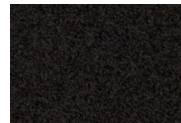
SP22: Sable



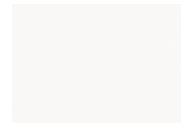
PG10: Terra Antigua



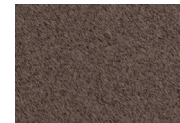
VT15: Velvet Pewter



VT35: Velvet Black



VT25: Velvet White



VT05: Velvet Bronze

