

# LENNOX

## Counter Stool

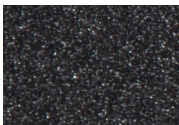


Item Number: #39183-CSA  
Cushion: #183  
Material: Steel  
Dimensions: W25.5" D27.5" H40.5"  
Cushion: W21" D38" H1.5"  
Arm Height: 32.75"  
Seat Height: 24.5"  
Weight: 35 lbs.  
Warranty: Limited 20 Year Structural (frame)  
(Retail) Limited 5 Year Finish  
Limited 5 Year Cushion  
Limited 2 year Component Parts  
Features: -3/4" Sq. Galvanized Steel Frame  
-Galvanized Steel Mesh Seat and Back  
-Ergonomic Seat & Back  
-Super-Polyester Powder Coating  
-UV Resistant  
-Dupont Delrin Insert Glides (COM0160)

COM Yardage: 1.5 yards  
*\*Based on 54" wide plain fabric w/ no repeat railroad, or centering. Contact sales@owlee.com for custom fabric quote.*



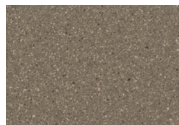
### Finishes:



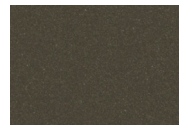
SP21: Graphite



SW40: Driftwood



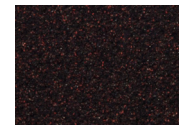
TC20: Sandalwood



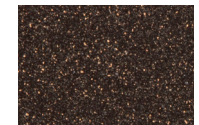
SP18: Dark Bronze



SP40: Copper Canyon



SP11: Rosewood



SP42: Espresso



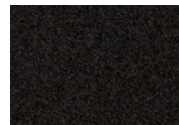
SP22: Sable



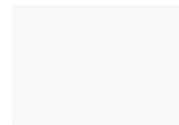
PG10: Terra Antigua



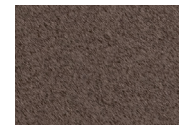
VT15: Velvet Pewter



VT35: Velvet Black



VT25: Velvet White



VT05: Velvet Bonze

