

Grand Cay

Swivel Counter Stool



Item Number: #6853-SCS

Cushion: #53-S (seat)
#103-B (back - optional)

Material: Wrought Aluminum

Dimensions: W24.25" D27" H46"

Seat Cushion: W20" D18" H3"

Back Cushion: W20" D1" H17.5"

Arm Height: 35"

Seat Height: 27.25"

Weight: TBD.

Warranty: Limited 20 Year Structural (frame)
Limited 5 Year Finish
Limited 5 Year Cushion
Limited 2 year Component Parts

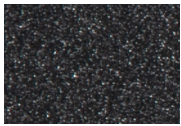
Features: -2" Wide Arm
-Cast Aluminum Back Detail
-Delrin Insert Glides
-Reticulated Outdoor-Grade Foam
-High Efficiency Transfer Powder Coating
-UV Resistant
-Glides: COM0101A



COM Yardage: Back Cushion - 1 yard
Seat Cushion - 1 yard

**Based on 54" wide plain fabric w/ no repeat railroad, or centering. Contact sales@owlee.com for custom fabric quote.*

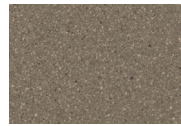
Finishes:



SP21: Graphite



SW40: Driftwood



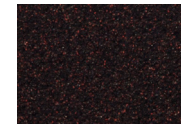
TC20: Sandalwood



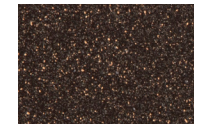
SP18: Dark Bronze



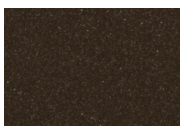
SP40: Copper Canyon



SP11: Rosewood



SP42: Espresso



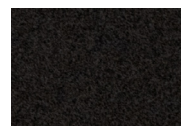
SP22: Sable



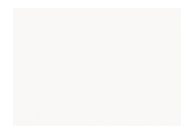
PG10: Terra Antigua



VT15: Velvet Pewter



VT35: Velvet Black



VT25: Velvet White



VT05: Velvet Bronze

