

# SAN CRISTÓBAL

## Adjustable Chaise



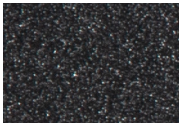
Item Number: #699-CH  
Cushion: #99  
Material: Wrought Iron  
Dimensions: W31.75" D69.5" H41.75"  
Seat Cushion: W26" D50" H7"  
Back Cushion: W26" D8" H26"  
Arm Height: 24.25"  
Seat Height: 17.75"  
Weight: 106 lbs.  
Warranty: Limited 20 Year Structural (frame)  
(Retail) Limited 5 Year Finish  
Limited 2 Year Cushion  
Limited 2 year Component Parts

Features: -3/4" Square Hammered Iron Tubing Frame  
-Hand Forged Scrolls with Fish Tail Stamping  
-Cast Iron Medallion  
-UV Resistant  
-Super-Polyester Powder Coating  
-Reticulated Outdoor-Grade Foam  
-Glides Protect Frame & Surface (COM0101A)



COM Yardage: 4 yards  
*\*Based on 54" wide plain fabric w/ no repeat railroad, or centering. Contact sales@owlee.com for custom fabric quote.*

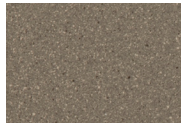
### Finishes:



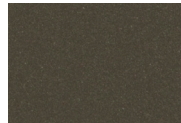
SP21: Graphite



SW40: Driftwood



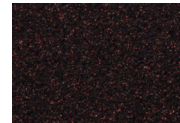
TC20: Sandalwood



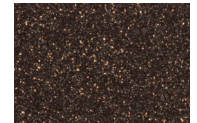
SP18: Dark Bronze



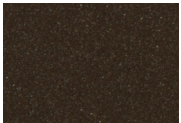
SP40: Copper Canyon



SP11: Rosewood



SP42: Espresso



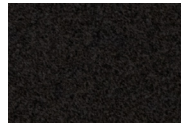
SP22: Sable



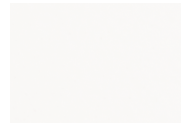
PG10: Terra Antigua



VT15: Velvet Pewter



VT35: Velvet Black



VT25: Velvet White



VT05: Velvet Bonze

