

MADISON

Dining Arm Chair

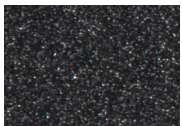


Item Number: #2253-A
Cushion: #53-S (seat)
#84-B (back - optional)
Material: Wrought Aluminum
Dimensions: W138.5" D28.5" H38.75"
Seat Cushion: W20" D18" H3"
Back Cushion: W20" D1.5" H22"
Arm Height: 26.25"
Seat Height: 18.5"
Weight: 28 lbs.
Warranty: Limited 20 Year Structural (frame)
(Retail) Limited 5 Year Finish
Limited 2 Year Cushion
Limited 2 year Component Parts
Features: -1" Sq. 12 Gauge Aluminum Tube Frame
-Contoured Back for Support & Comfort
-Flat Bar Strap for Seat Support
-Reticulated Outdoor-Grade Foam
-UV Resistant
-Optional welt and cording available
-Glides Protect Frame & Surface (COM0101A)



COM Yardage: Seat Cushion - 1 yard
Back Cushion - 1 yard
**Based on 54" wide plain fabric w/ no repeat railroad, or centering. Contact sales@owlee.com for custom fabric quote.*

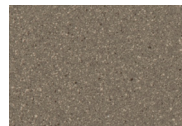
Finishes:



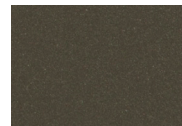
SP21: Graphite



SW40: Driftwood



TC20: Sandalwood



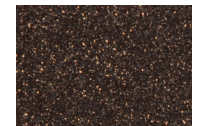
SP18: Dark Bronze



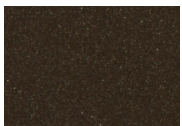
SP40: Copper Canyon



SP11: Rosewood



SP42: Espresso



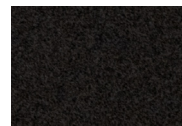
SP22: Sable



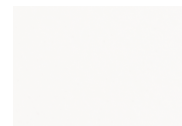
PG10: Terra Antigua



VT15: Velvet Pewter



VT35: Velvet Black



VT25: Velvet White



VT05: Velvet Bonze

