

MARQUETTE

Swivel Counter Stool With Arms



Item Number: #2053-SCS

Cushion: #53-S (Seat)
#53-B (Back - optional)

Material: Wrought Iron

Dimensions: W23" D24" H46.25"

Seat Cushion: W20" D18" H3"

Back Cushion: W20" D1" H17.5"

Arm Height: 35.25"

Seat Height: 27.25"

Weight: 47 lbs.

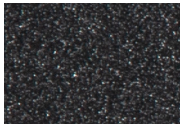
Warranty: Limited 20 Year Structural (frame)
Limited 5 Year Finish
Limited 2 Year Cushion
Limited 2 year Component Parts

Features: -3/4" Galvanized Steel Tubing Frame
-Galvanized Interwoven back
-Spring Steel Strap Seat
-Aluminum Rivets
-Leg Brace Support Stretchers
-Reticulated Outdoor-Grade Foam
-Glides Protect Frame & Surface (COM0101A)



COM Yardage: Seat Cushion - 1 yard
Back Cushion - 1 yard
**Based on 54" wide plain fabric w/ no repeat railroad, or centering. Contact sales@owlee.com for custom fabric quote.*

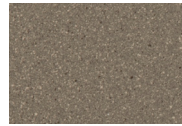
Finishes:



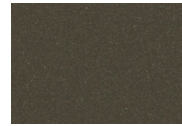
SP21: Graphite



SW40: Driftwood



TC20: Sandalwood



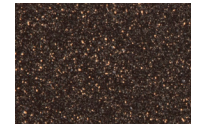
SP18: Dark Bronze



SP40: Copper Canyon



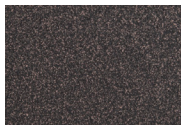
SP11: Rosewood



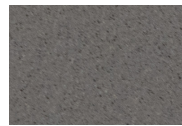
SP42: Espresso



SP22: Sable



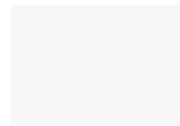
PG10: Terra Antigua



VT15: Velvet Pewter



VT35: Velvet Black



VT25: Velvet White



VT05: Velvet Bonze

