

MARQUETTE

Dining Arm Chair



Item Number: #2053-A

Cushion: #53-S (Seat)
#53-B (Back - optional)

Material: Wrought Iron

Dimensions: W23" D24.75" H36"

Seat Cushion: W20" D18" H3"

Back Cushion: W20" D1" H17.5"

Arm Height: 26"

Seat Height: 18"

Weight: 31 lbs.

Warranty: (Retail) Limited 20 Year Structural (frame)
Limited 5 Year Finish
Limited 2 Year Cushion
Limited 2 year Component Parts

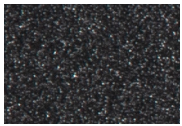
Features: -3/4" Galvanized Steel Tubing Frame
-Galvanized Interwoven back
-Spring Steel Strap Seat
-Aluminum Rivets
-Leg Brace Support Stretchers
-Reticulated Outdoor-Grade Foam
-Glides Protect Frame & Surface (COM0101A)



COM Yardage: Seat Cushion - 1 yard
Back Cushion - 1 yard

**Based on 54" wide plain fabric w/ no repeat railroad, or centering. Contact sales@owlee.com for custom fabric quote.*

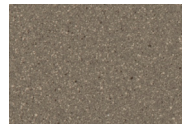
Finishes:



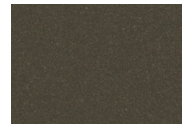
SP21: Graphite



SW40: Driftwood



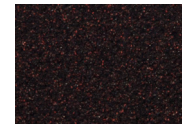
TC20: Sandalwood



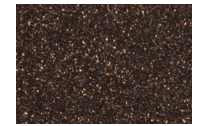
SP18: Dark Bronze



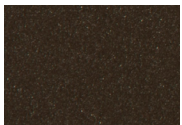
SP40: Copper Canyon



SP11: Rosewood



SP42: Espresso



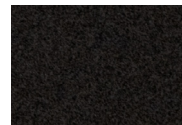
SP22: Sable



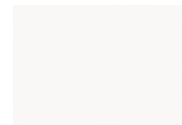
PG10: Terra Antigua



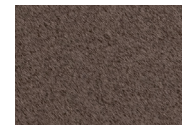
VT15: Velvet Pewter



VT35: Velvet Black



VT25: Velvet White



VT05: Velvet Bonze

