

MARQUETTE

Dining Side Chair

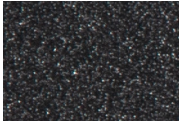


Item Number: #2051-S
Cushion: #51-S (Seat)
#51-B (Back - optional)
Material: Wrought Iron
Dimensions: W20" D26" H36"
Seat Cushion: W17.5" D17.5" H3"
Back Cushion: W17.5" D2.5" H17.5"
Seat Height: 18.25"
Weight: 25 lbs.
Warranty: Limited 5 Year Structural (frame)
(Commercial) Limited 3 Year Finish
Limited 1 Year Cushion
Limited 1 year Component Parts
Features: -3/4" Galvanized Steel Tubing Frame
-Galvanized Interwoven back
-Spring Steel Strap Seat
-Aluminum Rivets
-Leg Brace Support Stretchers
-Reticulated Outdoor-Grade Foam
-Glides Protect Frame & Surface (COM0101A)

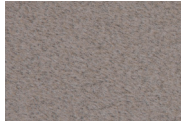


COM Yardage: Seat Cushion - 1 yard
Back Cushion - 1 yard
**Based on 54" wide plain fabric w/ no repeat railroad, or centering. Contact sales@owlee.com for custom fabric quote.*

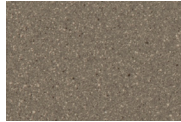
Finishes:



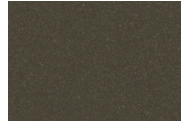
SP21: Graphite



SW40: Driftwood



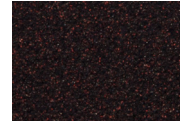
TC20: Sandalwood



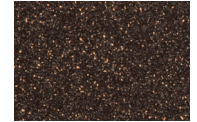
SP18: Dark Bronze



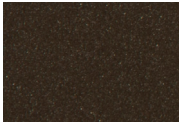
SP40: Copper Canyon



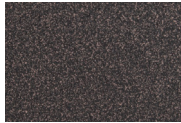
SP11: Rosewood



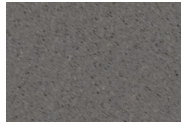
SP42: Espresso



SP22: Sable



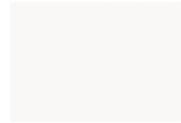
PG10: Terra Antigua



VT15: Velvet Pewter



VT35: Velvet Black



VT25: Velvet White



VT05: Velvet Bonze

