

CAMBRIA

Adjustable Chaise



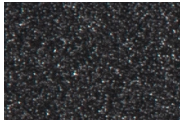
Item Number: #17138-CH
 Cushion: #138 (Seat, Back & Arm)
 Material: Wrought Iron
 Dimensions: W35" D80" H42"
 Seat & Back Cushion: W31" D75" H3"
 Arm Cushions: W6" D22" H11"
 Arm Height: 21.5"
 Seat Height: 17"
 Weight: 100 lbs.
 Warranty: (Retail) Limited 20 Year Structural (frame)
 Limited 5 Year Finish
 Limited 2 Year Cushion
 Limited 2 year Component Parts

Features: -3/4" Rd. Galvanized Steel Tube Frame
 -Barrel Back Design
 -Decorative Tufted Back & Arms Cushions
 -Velcro Tabs Keep Cushions Attached
 -Reticulated Outdoor-Grade Foam
 -DuPont Delrin Glides (COM0101A)



COM Yardage: 4.5 yards
**Based on 54" wide plain fabric w/ no repeat railroad, or centering. Contact sales@owlee.com for custom fabric quote.*

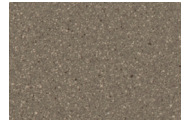
Finishes:



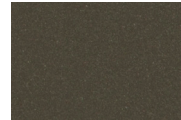
SP21: Graphite



SW40: Driftwood



TC20: Sandalwood



SP18: Dark Bronze



SP40: Copper Canyon



SP11: Rosewood



SP42: Espresso



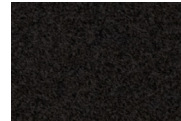
SP22: Sable



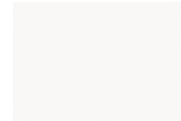
PG10: Terra Antigua



VT15: Velvet Pewter



VT35: Velvet Black



VT25: Velvet White



VT05: Velvet Bonze

