

CAMBRIA

Club Swivel Counter Stool



Item Number: #17133-SCS

Cushion: #133 (Seat, Back & Arms)

Material: Wrought Iron

Dimensions: W29.5" D28" H46.25"

Seat Cushion: W20" D20" H4"

Back Cushion: W23" D6" H21"

Arm Cushions: W5" D17.25" H8.25" (x2)

Arm Height: 34.5"

Seat Height: 27.5"

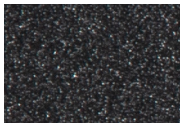
Weight: 51 lbs.

Warranty: Limited 20 Year Structural (frame)
 (Retail) Limited 5 Year Finish
 Limited 2 Year Cushion
 Limited 2 year Component Parts

Features: -3/4" Rd. Galvanized Steel Tube Frame
 -Barrel Back Design
 -Decorative Tufted Back & Arms Cushions
 -Velcro Tabs Keep Cushions Attached
 -PlushComfort™ Seat Cushion
 -DuPont Delrin Glides (COM0101A)

COM Yardage: Seat, Back & Arm Cushions - 2.25 yards
**Based on 54" wide plain fabric w/ no repeat railroad, or centering. Contact sales@owlee.com for custom fabric quote.*

Finishes:



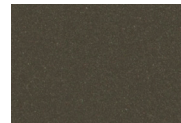
SP21: Graphite



SW40: Driftwood



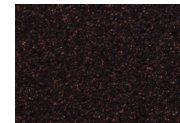
TC20: Sandalwood



SP18: Dark Bronze



SP40: Copper Canyon



SP11: Rosewood



SP42: Espresso



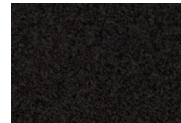
SP22: Sable



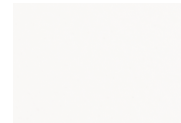
PG10: Terra Antigua



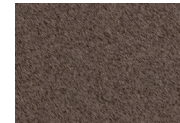
VT15: Velvet Pewter



VT35: Velvet Black



VT25: Velvet White



VT05: Velvet Bonze

