

CAMBRIA

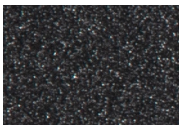
Club Swivel Counter Stool



- Item Number: #17133-SCS
- Cushion: #133 (Seat, Back & Arms)
- Material: Wrought Iron
- Dimensions: W29.5" D28" H46.25"
- Seat Cushion: W20" D20" H4"
- Back Cushion: W23" D6" H4"
- Arm Cushions: W5" D17.25" H8.25" (x2)
- Arm Height: 34.5"
- Seat Height: 27.5"
- Weight: 51 lbs.
- Warranty: Limited 5 Year Structural (frame)
 (Commercial) Limited 3 Year Finish
 Limited 1 Year Cushion
 Limited 1 year Component Parts
- Features: -3/4" Rd. Galvanized Steel Tube Frame
 -Barrel Back Design
 -Decorative Tufted Back & Arms Cushions
 -Velcro Tabs Keep Cushions Attached
 -PlushComfort™ Seat Cushion
 -DuPont Delrin Glides (COM0101A)
- COM Yardage: Seat, Back & Arm Cushions - 2.25 yards
**Based on 54" wide plain fabric w/ no repeat railroad, or centering. Contact sales@owlee.com for custom fabric quote.*



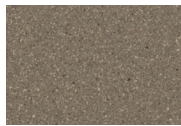
Finishes:



SP21: Graphite



SW40: Driftwood



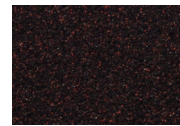
TC20: Sandalwood



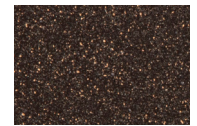
SP18: Dark Bronze



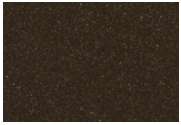
SP40: Copper Canyon



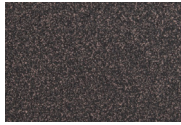
SP11: Rosewood



SP42: Espresso



SP22: Sable



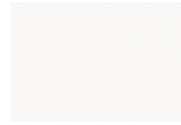
PG10: Terra Antigua



VT15: Velvet Pewter



VT35: Velvet Black



VT25: Velvet White



VT05: Velvet Bonze

