

PALISADES

Dining Arm Chair



Item Number: #4653-A

Cushion: #53-S (Seat)
#53-B (Back - optional)

Material: Wrought Aluminum

Dimensions: W23" D28" H38"

Seat Cushion: W20" D18" H3"

Back Cushion: W20" D1" H17.5"

Arm Height: 26"

Seat Height: 19"

Weight: 20 lbs.

Warranty: Limited 5 Year Structural (frame)
(Commercial) Limited 3 Year Finish
Limited 1 Year Cushion
Limited 1 year Component Parts

Features:

- 1" Square Aluminum Frame
- Transitional Cast Aluminum Back Detail
- Smooth Hand Forged Aluminum Scrolls
- Contoured Back for Superior Comfort
- UV Resistant
- Reticulated Outdoor-Grade Foam
- Glides Protect Frame & Surface (COM0101A)

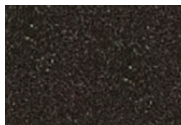
COM Yardage: Back Cushion - 1 yard
Seat Cushion - 1 yard

**Based on 54" wide plain fabric w/ no repeat railroad, or centering. Contact sales@owlee.com for custom fabric quote.*

Finishes:



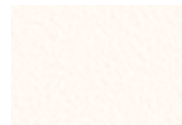
PG20: Coastal Grey



SP21: Graphite



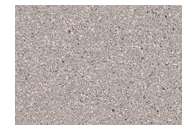
SP08: Textured Black



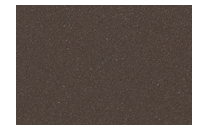
TC75: Oxford White



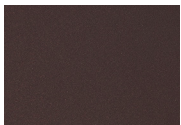
SW40: Driftwood



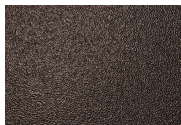
TC20: Sandalwood



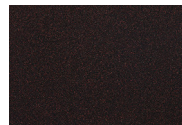
SP18: Dark Bronze



PG50: Metallic Cinnamon



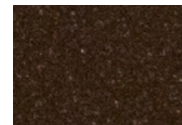
SP40: Copper Canyon



SP11: Rosewood



SP42: Espresso



SP22: Sable



TG10: Terra Antigua

