

# MONTERRA

Mini Spring Base Lounge Arm Chair



- Item Number: #424-MSB
- Cushion: #24 (seat & back)
- Material: Wrought Iron
- Dimensions: W35.75" D31" H39"
- Seat Cushion: W23" D21" H3.5"
- Back Cushion: W27" D4" H24"
- Arm Height: 22.5"
- Seat Height: 19"
- Weight: 60 lbs.
- Warranty: Limited 5 Year Structural (frame)  
(Commercial) Limited 3 Year Finish  
Limited 1 Year Cushion  
Limited 1 year Component Parts
- Features:
  - 3/4" Steel Tubing Frame
  - 1 1/2" Flat Embossed Back Bars
  - Convex Back Bend with Lumbar Support
  - Enlarged Hand-Hammered Rivets
  - Galvanized Steel Mesh Seat
  - Reticulated Outdoor-Grade Foam
  - Glides Protect Frame & Surface (COM0101A)



COM Yardage: Back Cushion - 3.5 yards  
*\*Based on 54" wide plain fabric w/ no repeat railroad, or centering. Contact sales@owlee.com for custom fabric quote.*

Finishes:



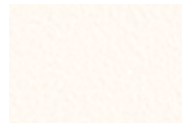
PG20: Coastal Grey



SP21: Graphite



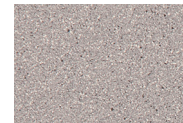
SP08: Textured Black



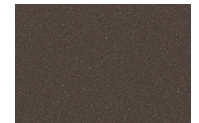
TC75: Oxford White



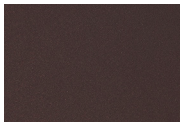
SW40: Driftwood



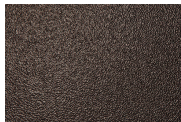
TC20: Sandalwood



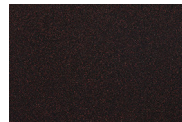
SP18: Dark Bronze



PG50: Metallic Cinnamon



SP40: Copper Canyon



SP11: Rosewood



SP42: Espresso



SP22: Sable



TG10: Terra Antigua

