

MONTERRA

Dining Side Chair



Item Number: #404-S
 Cushion: #04-S (Seat)
 #04-B (Back - optional)
 Material: Wrought Iron
 Dimensions: W24.5" D26" H39.25"
 Seat Cushion: W19.5" D20" H3.5"
 Back Cushion: W24" D1" H23"
 Seat Height: 19"
 Weight: 20 lbs.
 Warranty: Limited 5 Year Structural (frame)
 (Commercial) Limited 3 Year Finish
 Limited 1 Year Cushion
 Limited 1 year Component Parts

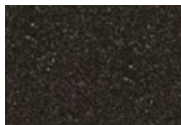
Features: -3/4" Steel Tubing Frame
 -1 1/2" Flat Embossed Back Bars
 -Convex Back Bend with Lumbar Support
 -Enlarged Hand-Hammered Rivets
 -Galvanized Steel Mesh Seat
 -Reticulated Outdoor-Grade Foam
 -Glides Protect Frame & Surface (COM0101A)

COM Yardage: Back Cushion - 1 yard
 Seat Cushion - 1 yard
**Based on 54" wide plain fabric w/ no repeat railroad, or centering. Contact sales@owlee.com for custom fabric quote.*

Finishes:



PG20: Coastal Grey



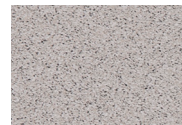
SP21: Graphite



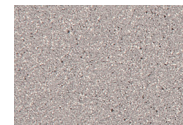
SP08: Textured Black



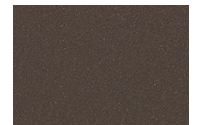
TC75: Oxford White



SW40: Driftwood



TC20: Sandalwood



SP18: Dark Bronze



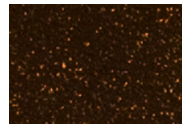
PG50: Metallic Cinnamon



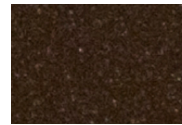
SP40: Copper Canyon



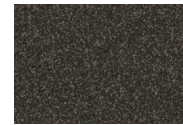
SP11: Rosewood



SP42: Espresso



SP22: Sable



TG10: Terra Antigua

