

# MONTERRA

## Center Sectional



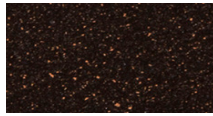
Item Number: #425-C  
Cushion: #25-C  
Material: Wrought Iron  
Dimensions: W68" D44.5" H43.5"  
Seat Cushion: W62.25" D34.25" H9"  
Back Cushion: W72" D9" H34"  
Seat Height: 20"  
Weight: 90 lbs.  
Warranty: Limited 20 Year Structural (frame)  
(Retail) Limited 5 Year Finish  
Limited 2 Year Cushion  
Limited 2 year Component Parts  
Features: -Hand forged wrought iron  
-Super-Polyester powder coating  
-UV Resistant  
-Reticulated Outdoor-Grade Foam  
-Stock Sunbrella and COM available  
COM Yardage: 7.5 yards  
*\*Based on 54" wide plain fabric w/ no repeat railroad, or centering. Contact sales@owlee.com for custom fabric quote.*



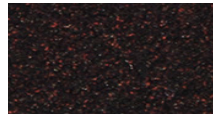
### Finishes:



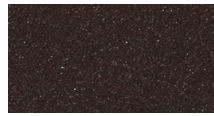
SP40 Copper Canyon



SP42 Espresso



SP11 Rosewood



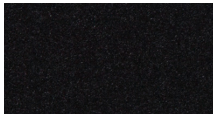
SP22 Sable



PG50 Metallic Cinnamon



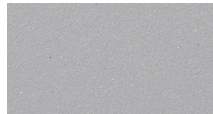
SP18 Dark Bronze



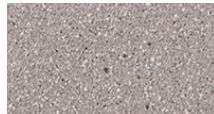
SP08 Textured Black



SP21 Graphite



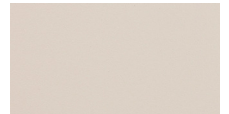
TC70 Alpine Silver



TC20 Sandalwood



SW40 Driftwood



TC75 Oxford White

