

# MONTERRA

## Center Sectional



Item Number: #425-C  
 Cushion: #25-C  
 Material: Wrought Iron  
 Dimensions: W68" D44.5" H43.5"  
 Seat Cushion: W62.25" D34.25" H9"  
 Back Cushion: W72" D9" H34"  
 Seat Height: 20"  
 Weight: 90 lbs.  
 Warranty: Limited 5 Year Structural (frame)  
 (Commercial) Limited 3 Year Finish  
 Limited 1 Year Cushion  
 Limited 1 year Component Parts

Features: -Hand forged wrought iron  
 -Super-Polyester powder coating  
 -UV Resistant  
 -Reticulated Outdoor-Grade Foam  
 -Stock Sunbrella and COM available

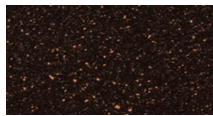
COM Yardage: 7.5 yards  
*\*Based on 54" wide plain fabric w/ no repeat railroad, or centering. Contact sales@owlee.com for custom fabric quote.*



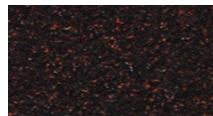
### Finishes:



SP40 Copper Canyon



SP42 Espresso



SP11 Rosewood



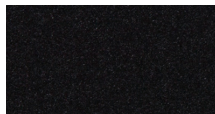
SP22 Sable



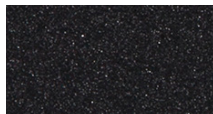
PG50 Metallic Cinnamon



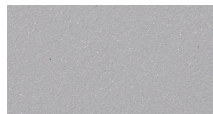
SP18 Dark Bronze



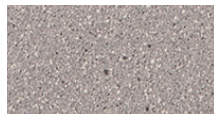
SP08 Textured Black



SP21 Graphite



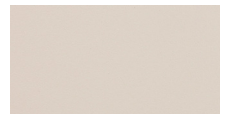
TC70 Alpine Silver



TC20 Sandalwood



SW40 Driftwood



TC75 Oxford White

